

Design and Technology – Year 6 Summer Work

L.O. Design a Minecraft character



MINECRAFT

Exclusive!

Steve

Design & Technology

Drawing in isometric

! Making custom skins

Dressing Room

Sign In

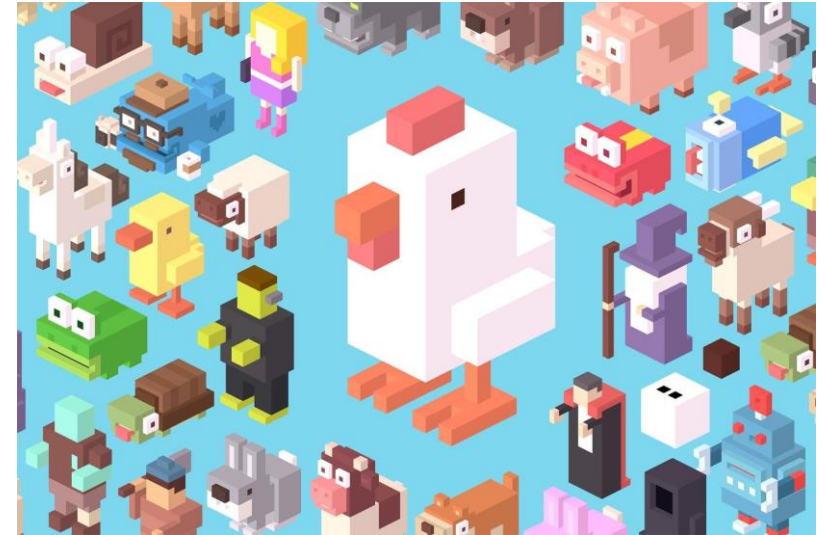
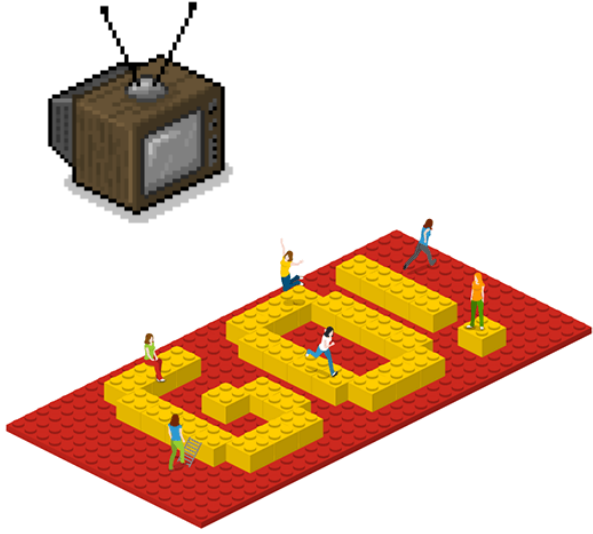


WHEN DO YOU NEED TO DO IT BY?

Hand in your work to your Design Technology teacher Google by **Friday 27th September**

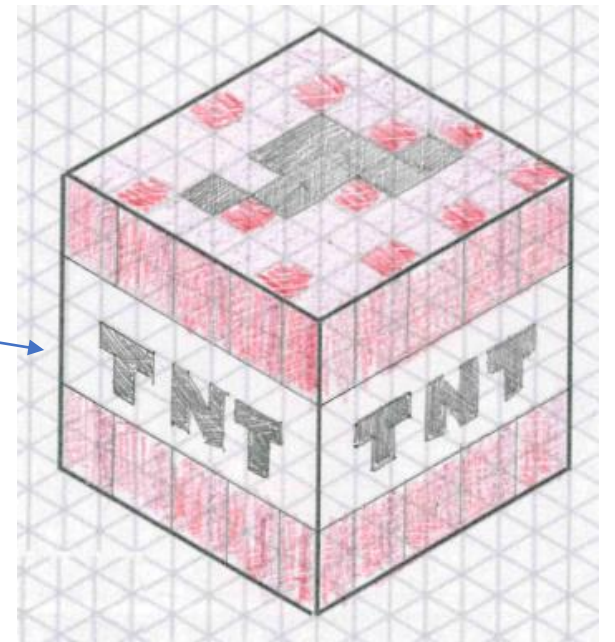
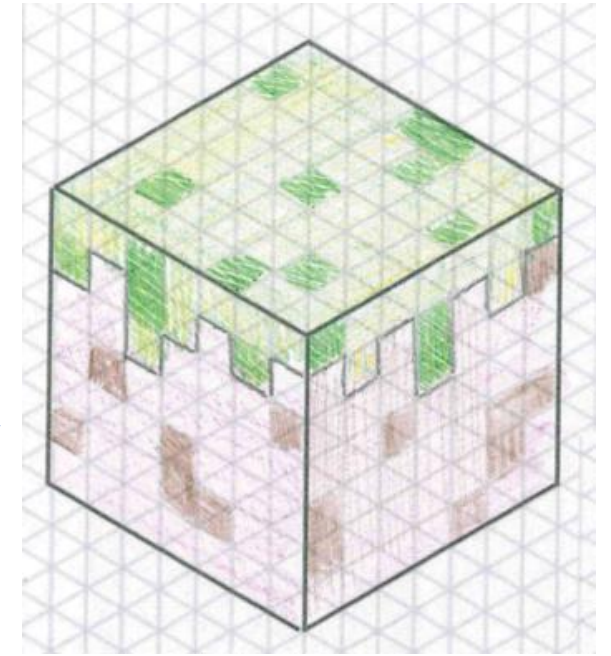
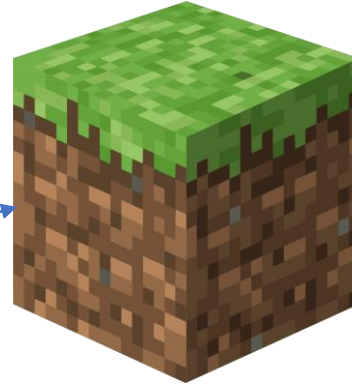
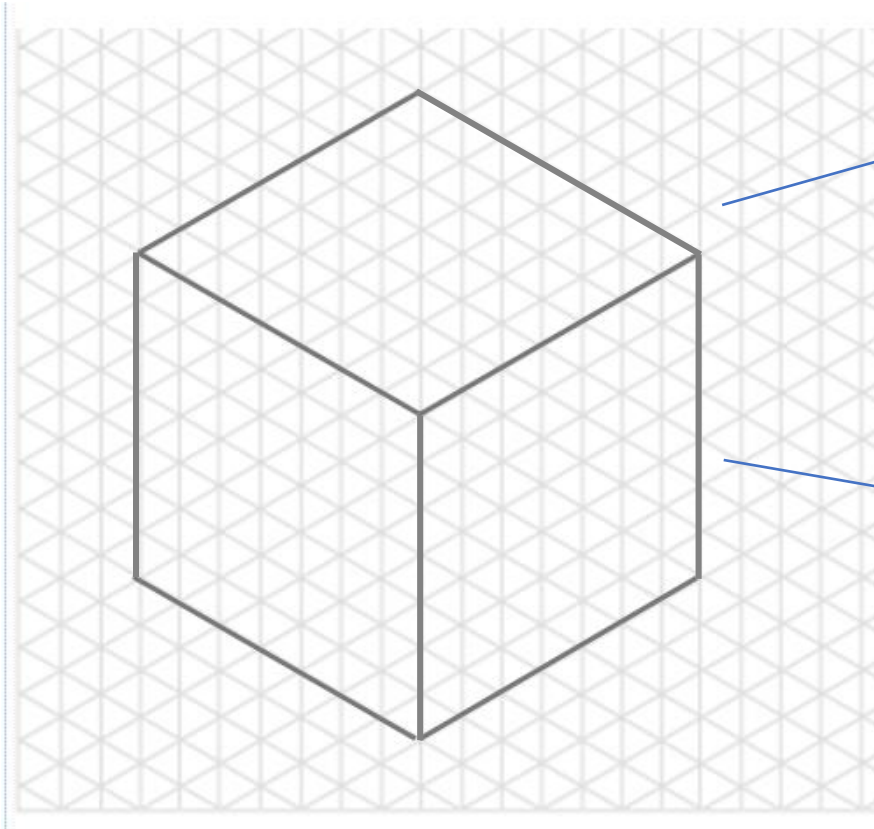
v1.18.31

Isometric Drawing in Computer Games



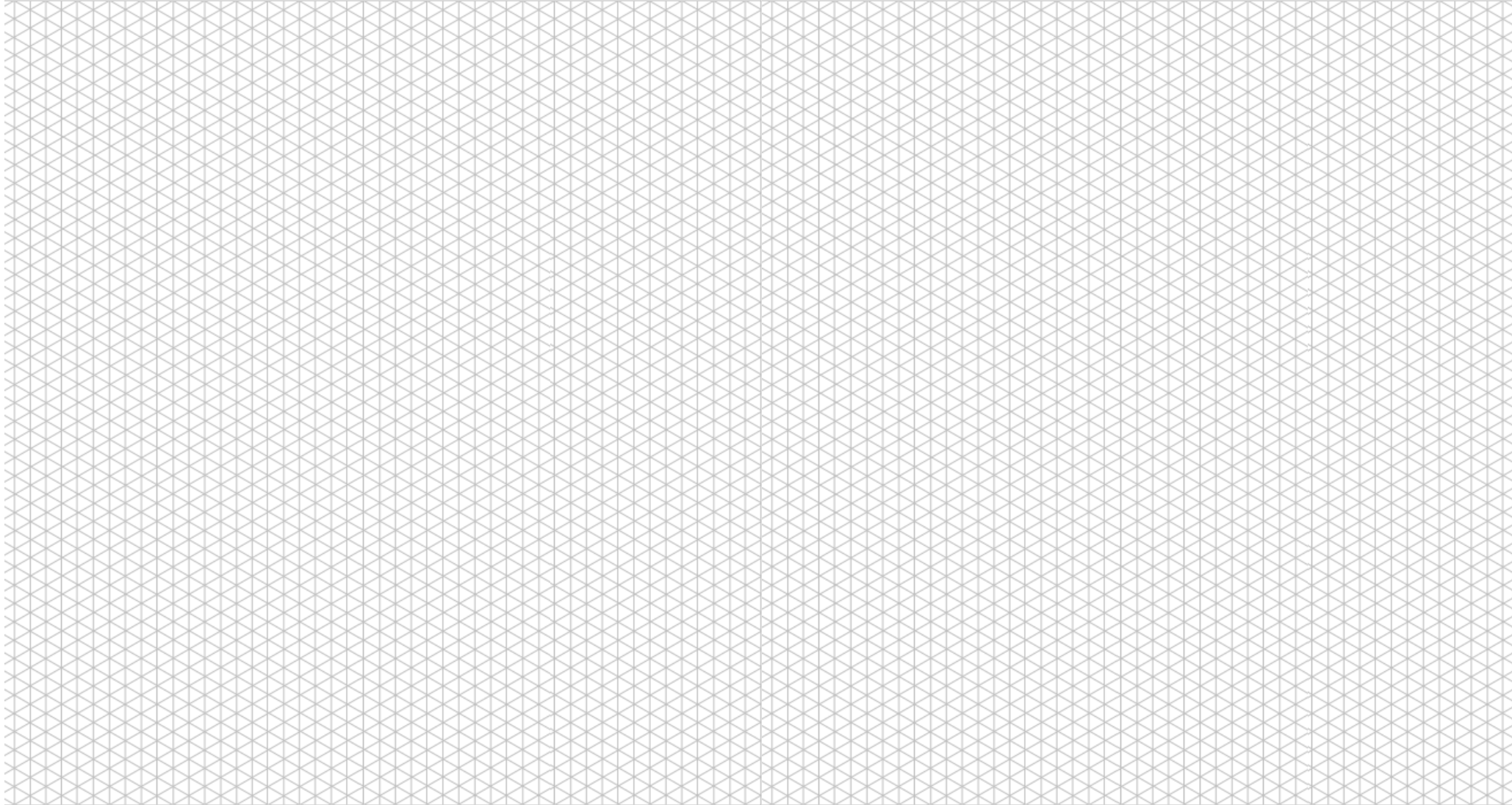
Task 1: Create a Minecraft block using isometric paper.

Follow the steps below to add lines to the shape on your printed out paper. Once complete, add features/details to make it look like a Minecraft brick.



Task 1: Create a Minecraft block using isometric paper.

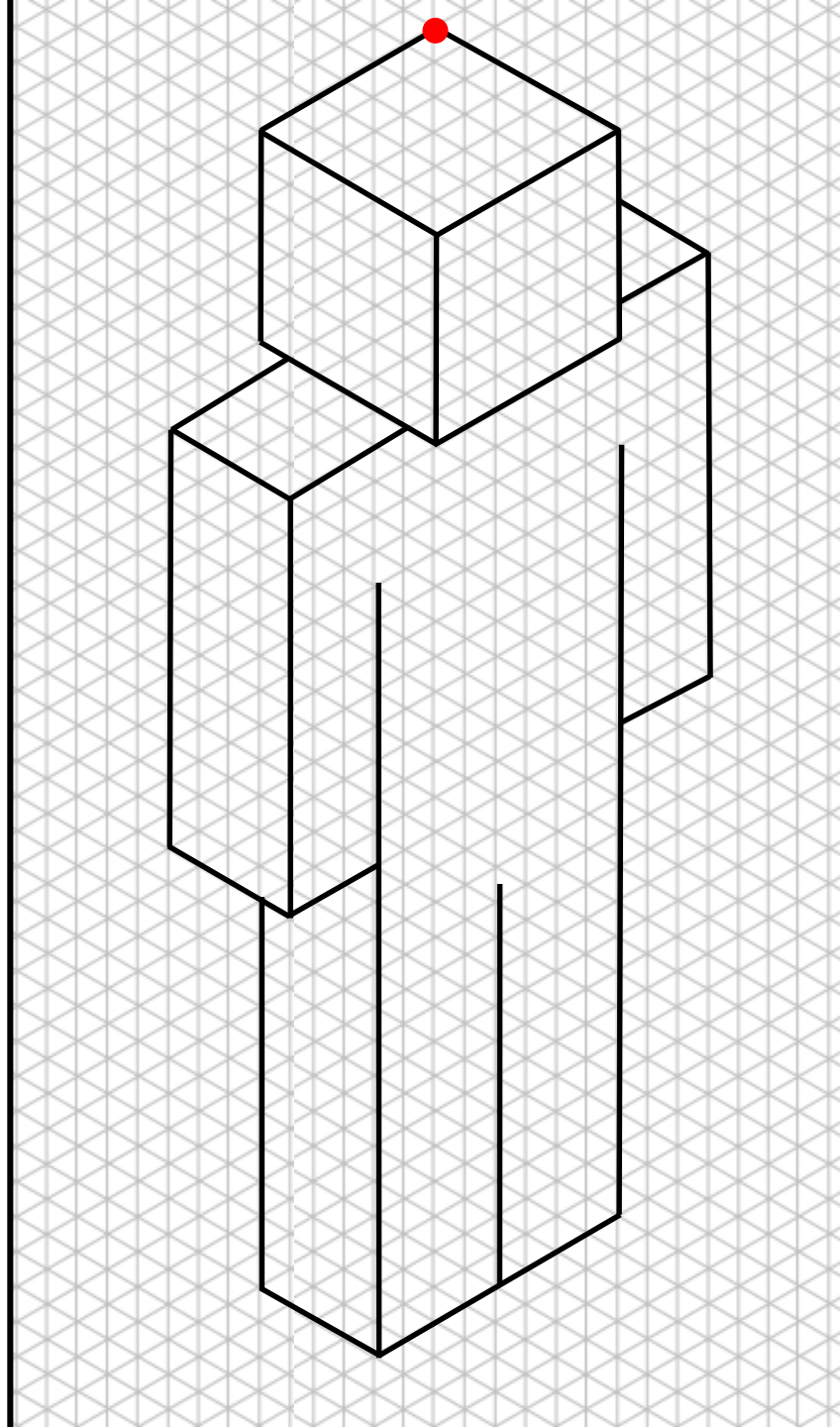
Print off this page



Task 2: Drawing your Minecraft character.

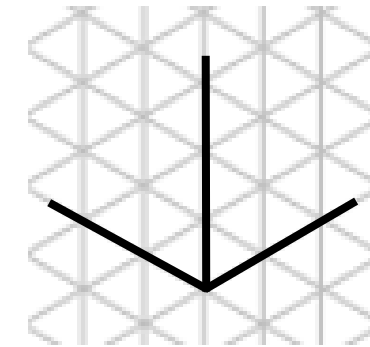
Follow the steps on the screen to draw your character.

Everyone will start their drawing on the **red dot** at the top of the isometric paper.

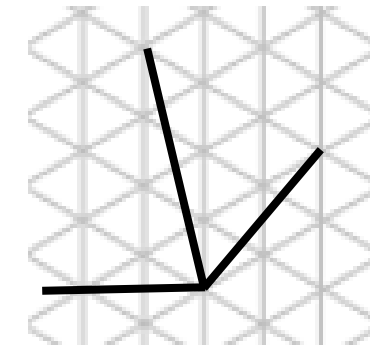


Top tip!

1. All straight lines **must** be drawn with a rule and a pencil.
2. All lines **must** be drawn along a grid line.



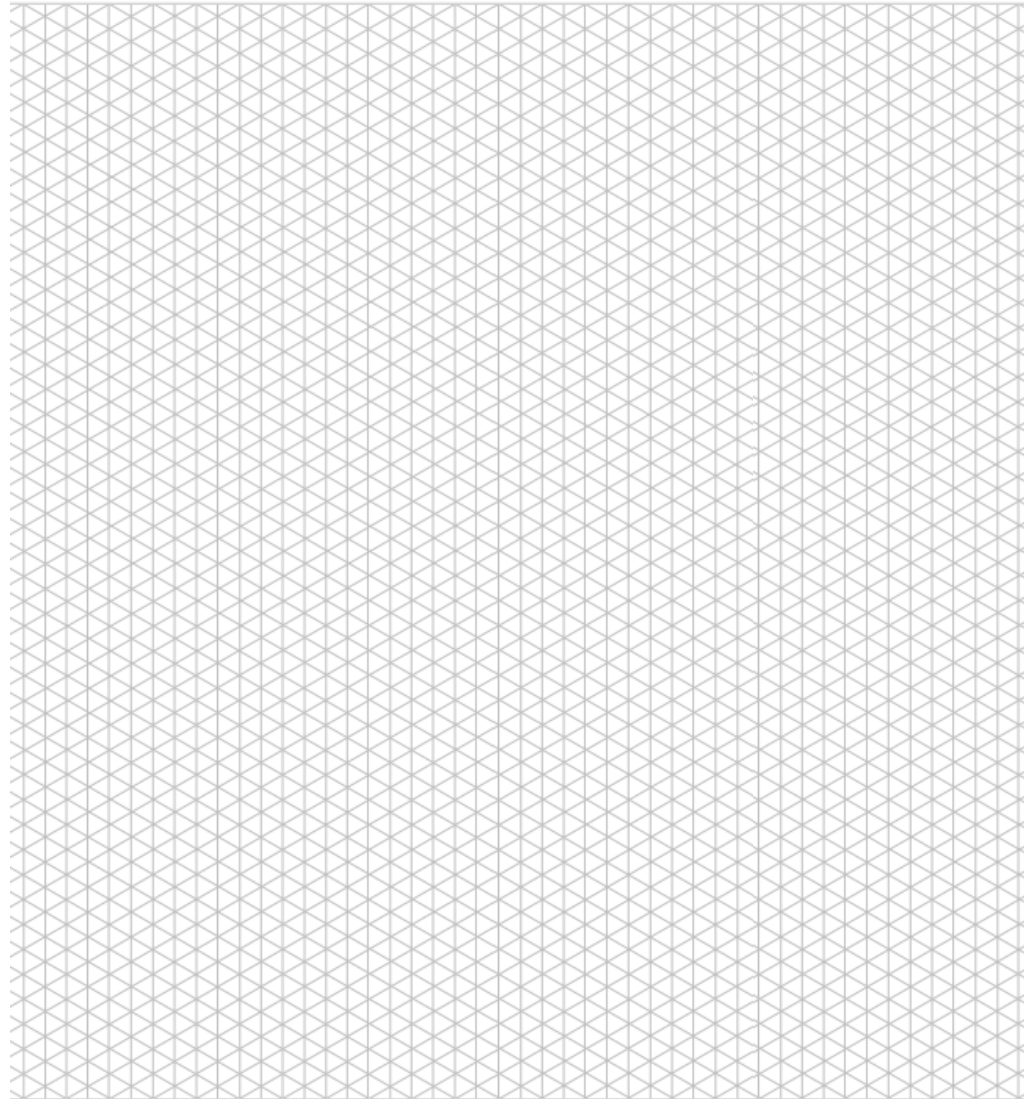
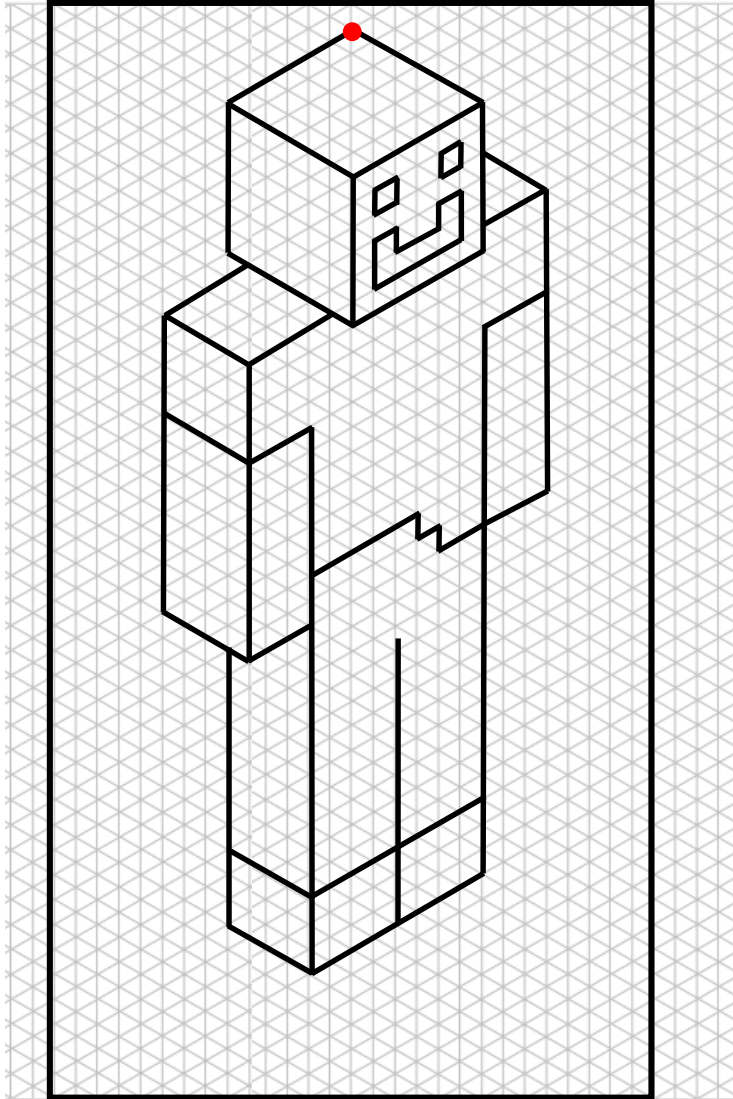
Right 😊
Lines are on the grid



Wrong 😞
Lines aren't on the grid

Task 2: Drawing your Minecraft character.

Print off this page



Label and explain your character

PRIZES:

Submitted work will receive 5 House Points



Task 3: Add features and colours to your Minecraft character to make it look realistic.

